

# **Project Ideas from Commission Members**

**Middlefield's Future Meeting**

**June 20, 2023**

**Selectmen**

**June 22, 2023**



# Purchase Town Green - if available

- Sensible addition to town center property





# Market Middlefield

- Nickname/tag line for town?
  - Heart of Connecticut
  - Eat/Shop/Stay/Play
  - CT's Playground
- Welcoming entrance signage



- **Signage** - point direction to **businesses/tourist destinations/open spaces?**





# Establish Overall Vision for Town Future

## ***Draft Vision Statement:***

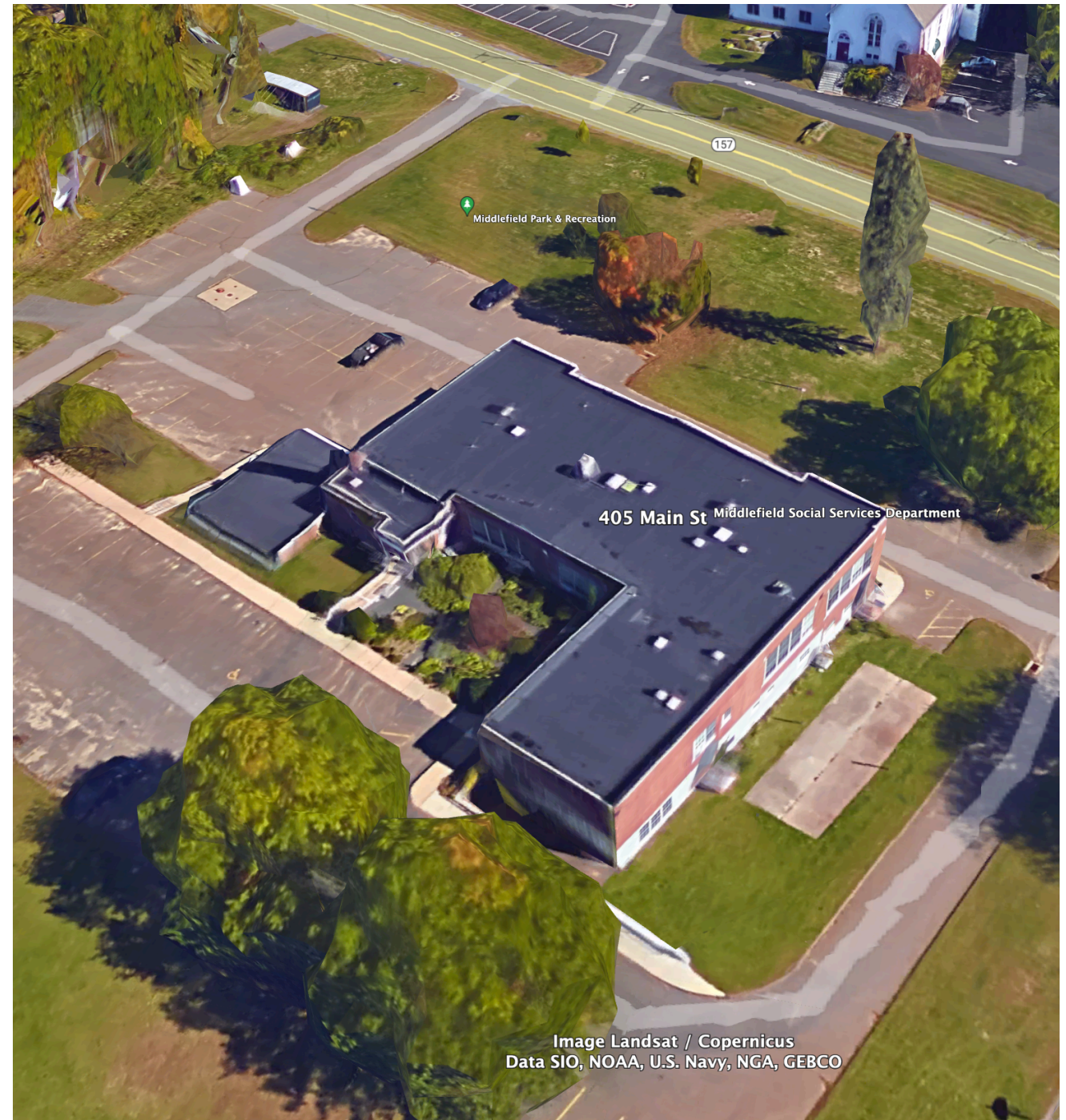
*We envision Middlefield as a diverse and sustainable community that maintains our community's rural character and expands our residents' quality of life, while welcoming businesses and visitors to our historic, scenic, and playful community.*





# Update Community Center Facility

- Repaving parking lot
- Carpeting upstairs needs to be updated
- Update Furnace/HVAC systems
  - Split systems - DMYFS and Historical Society rooms (outer wall for cond. drain)
- Two large meeting rooms cleaned top-btm disinfected/wiped down
- New screen in auditorium
- Small conference room returned/ storage somewhere else
  - Emergency management room?
  - Stage side storage room upgraded?
- Update up/downstairs men's/women's restrooms
- Can hear wind through windows
- Remove Junk





# Agri/Eco-Tourism in our Open Spaces

- Manage open space haying for bird fledging
  - Bobolinks build their nests on the ground in hayfields
  - Farmers mow their fields during the nesting season for most valuable crop
  - Results in a complete loss of eggs and nestlings.
- Alternative: farmers manage/cultivate their fields for grassland birds
  - Pay farmers to cultivate for bird nesting and early or late haying
- Return to CT Audubon Tourism Path





# Nickname for the Town?

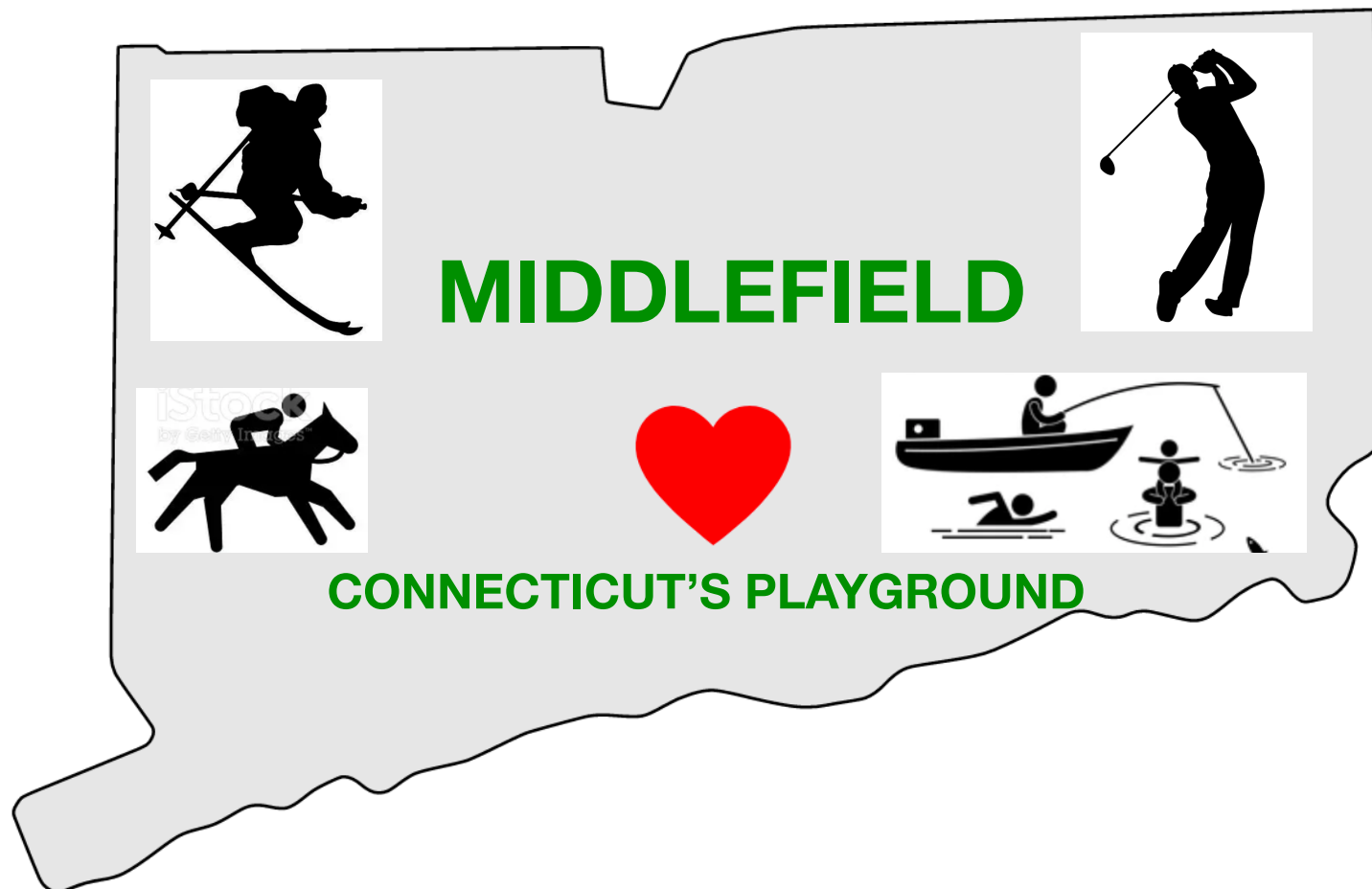
- Create a new tag line for Middlefield branding
  - Heart of CT
  - Eat/Stop/Stay/Play
  - Central CT's Playground

**MIDDLEFIELD**



THE HEART OF CONNECTICUT

- Useful for promotion
- Create merchandise / swag with town name and tag
- Driver for contests, fund raisers, specific campaigns
- Painted artifacts could be created by town organizations





# Increased Security Access in Town Bldgs

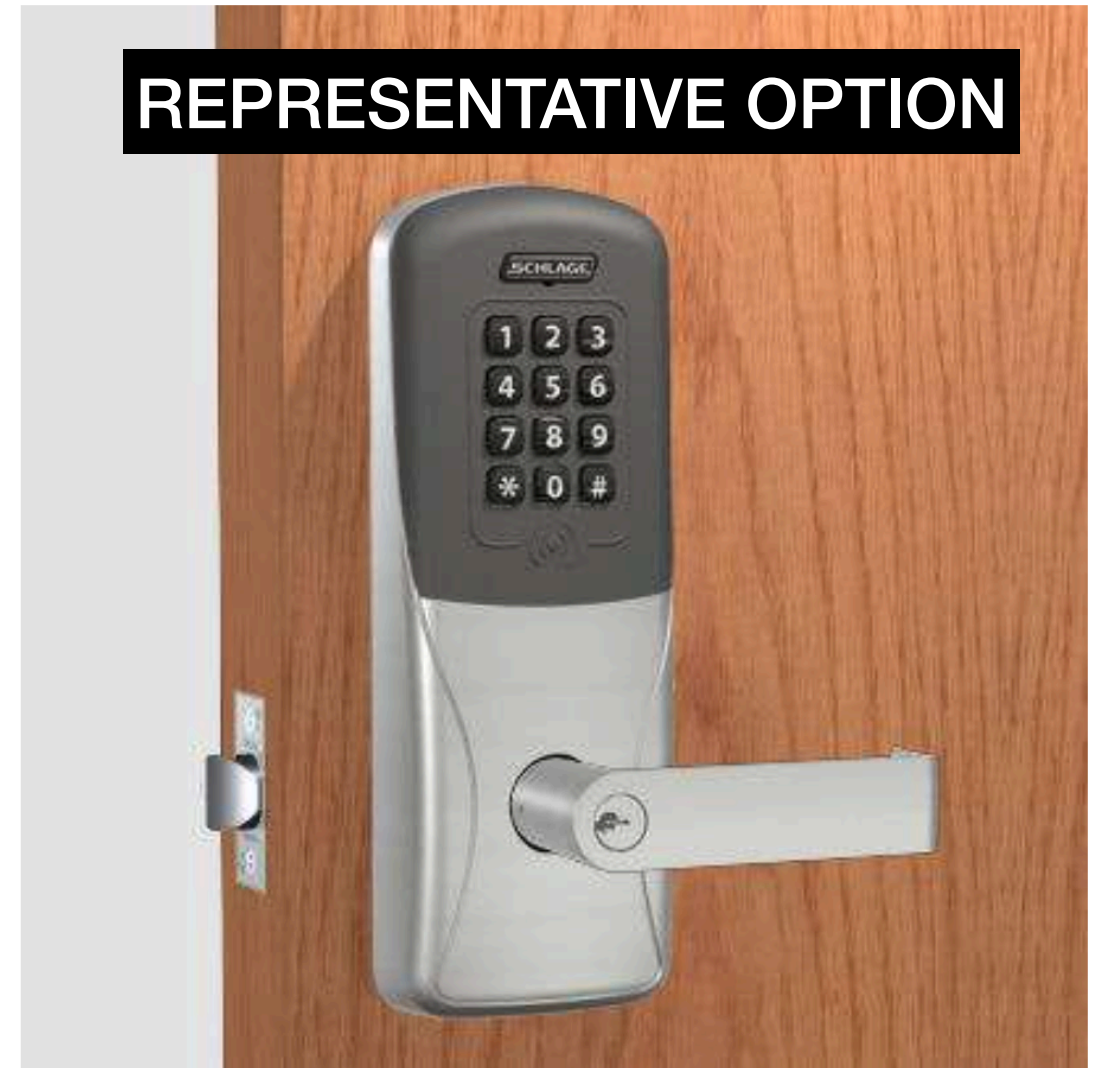
- How many townspeople have keys to the Community Center?

**HAVE LOST TRACK**

- Vulnerability includes town records, equipment, vandalism, personal safety
- Key card or combination access with entry recording could maintain awareness

**WHO'S ENTERING WHEN**

- 4 would be needed for Community Center



**SCHLAGE CO-200**

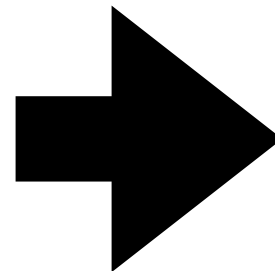
Proximity + Keypad Card Access Lock

[Customer Questions \(5\)](#)

**\$1,087.28 – \$1,141.48**

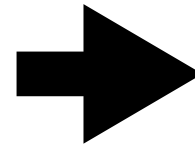
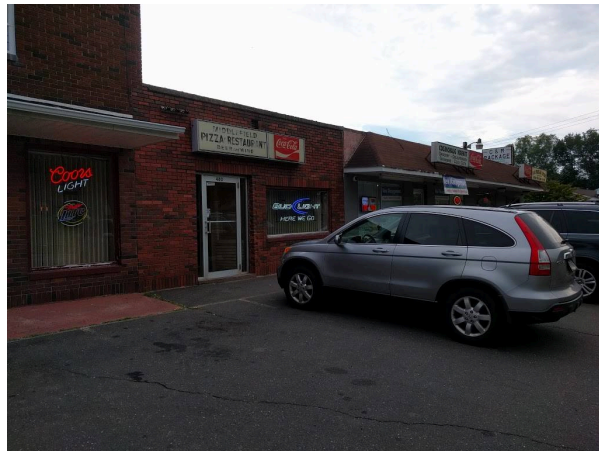


# Improved Signage Exiting Rte 9 and US 91



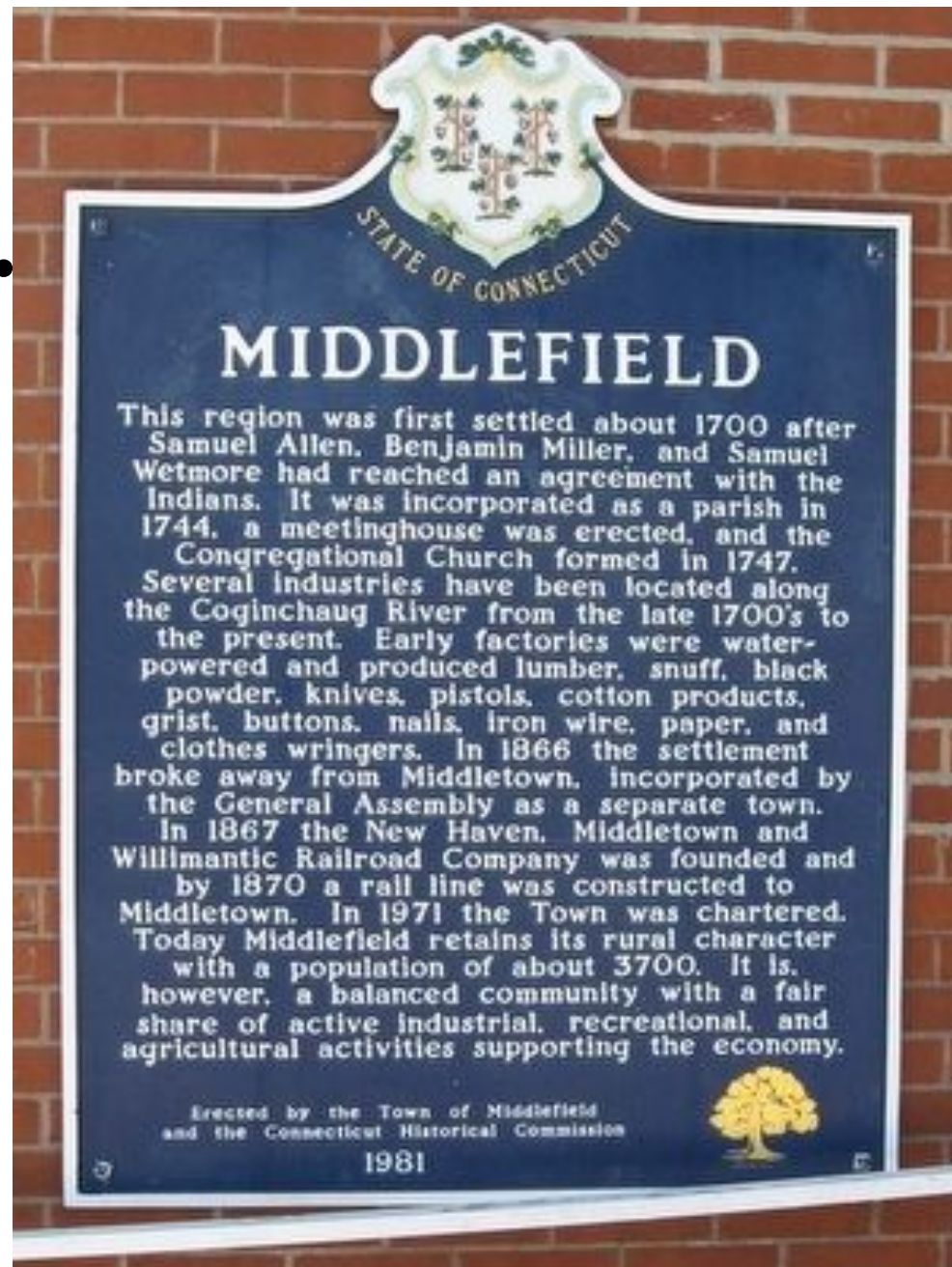


# Town Center Visual Upgrade - e.g. Chester





# Historical Markers on Bldgs./Landmarks



- Identify sites for additional designation of historical landmark recognition
- Describe significance on viewable plaques



# Engage Businesses with Possible Magnet School

- A magnet school is an entire school with a special focus.
- A business like Zygo would have scientists capable of teaching as adjunct faculty in a high technology school
- Could be located on land parcels north of current Zygo location



## ZYGO - Precision Optical Metrology





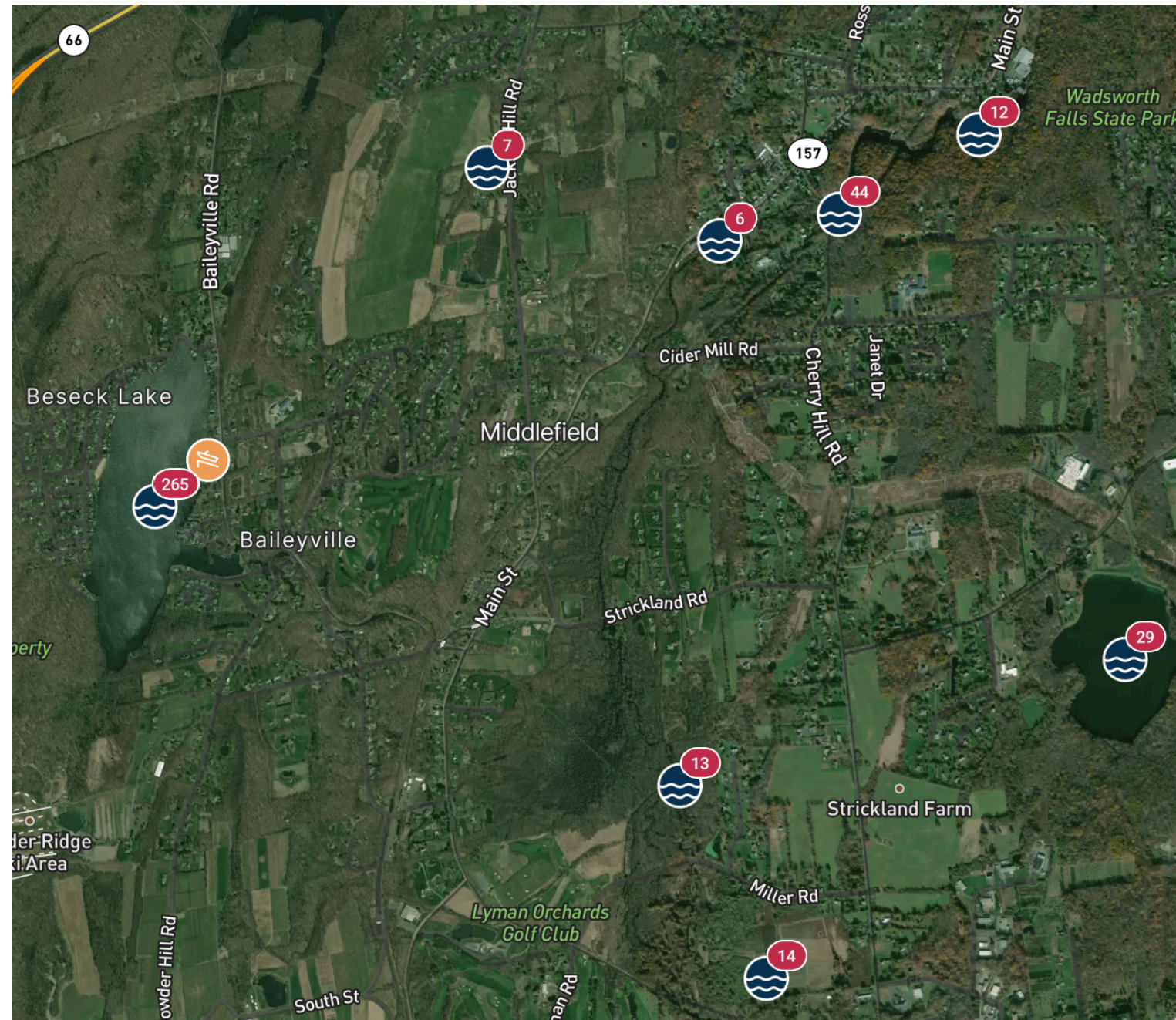
# Re-look at Trout Unlimited Plan for River

- Sites with (btm to top) 14,13, 6 and 44 are # of catches along Coganchaug River in Middlefield
- No catches between Lyman Meadow Brook and Hans Brook / Wadsworth Falls
- Need revitalization and accessibility plan for river course

**Coganchaug River Watershed**

Town	Total Acres in Town	Total Town Acres in Watershed	Percent of town in Watershed
Durham	14,912	12,130.80	81.3%
Guilford	30,464	1,663.04	5.5%
Madison	23,232	399.10	1.7%
Meriden	30,720	34.30	0.1%
Middlefield	8,512	7,104.60	83.5%
Middletown	27,456	3,214.00	11.7%
North Branford	17,152	177.90	1.0%
Wallingford	127,360	199.80	0.2%

## Recent Reported Fish Catches - Coganchaug River





# Mobilize Equestrian/Horse Farms Group

- Horse Farms
  - Triangle A Stables - Jackson Hill Road
  - Epic Farms - Cherry Hill Road
  - Rolling Meadows Farm - Miller Road
  - Ridgeland Farm - Powder Hill Road



Epic Farms Facility



- Riding trails and lessons
- Boarding
- Create new riding trail to attract equestrians?

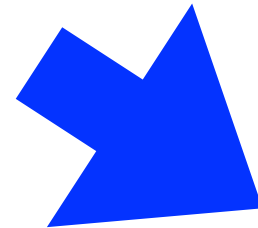


# Lyman School as Possible Affordable Hsg.



## For Example

Northpointe Development Corp. to convert the former Smith Elementary School to an affordable housing project. (Wisconsin)





# Christmas Market in Peckham Park

- Christmas Markets are community gathering opportunities
- Craftspeople, shop keepers offer goodies and wares to evening attendees
- Typically held post Thanksgiving to mid Dec.
- Could be holiday weekends activity for town-visitors





# Create Middlefield Swag

- Fundraising, community building opportunity
- Careful not to encroach on Durham Pharmacy or Perrotti's store "Middlefield" named merchandise





# Electronic Activities Sign - Town Green

- Communication of town messages and activities is critical
- Besides social media / websites - a programmable, town center sign would be another highly visible method



EXAMPLES